

INSTRUCTION MANUAL



PIXEL
PICTURE



/pixelpicture.eu



@pixelpicture.eu



A - clip



B - clip



C - clip tool



D - hook



E - screw



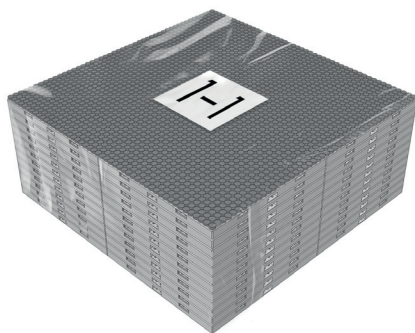
F - anchor



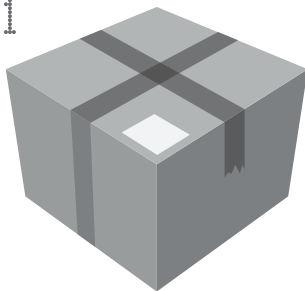
G - hanging clip



H - leveling screw

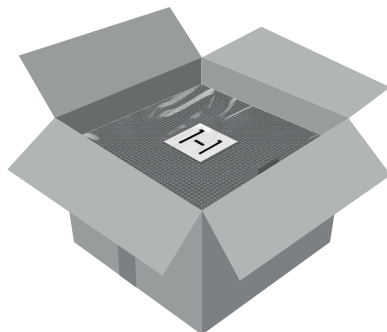


1.1



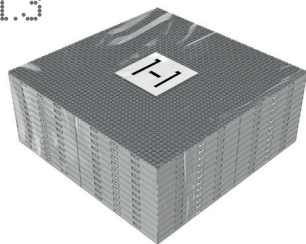
1.1 Carefully open the package, ensuring that no damage is caused to the products inside.

1.2

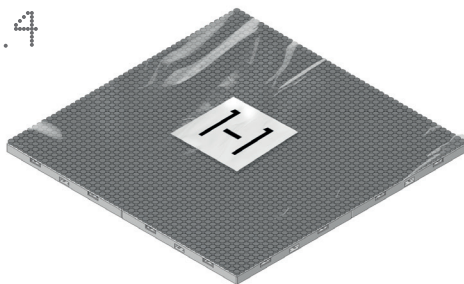


1.2 Remove the products from the packaging and inspect them thoroughly to ensure all components are present.

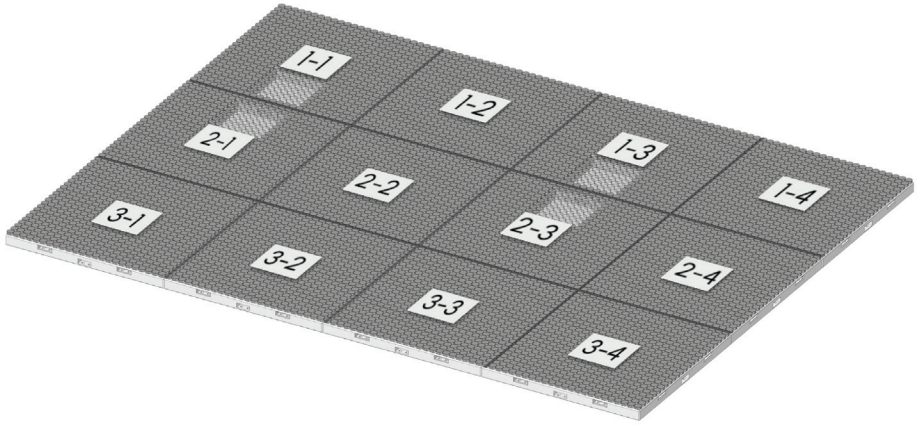
1.3



1.4

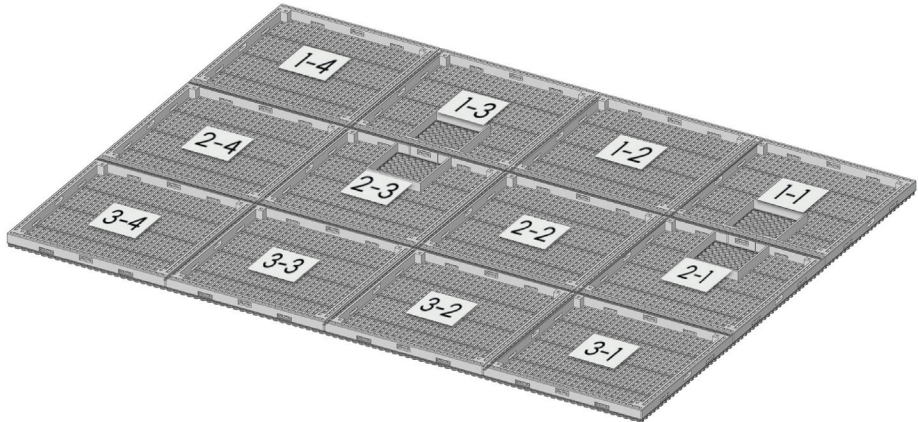


1.5



1.5 Arrange the artwork parts according to the sequence of row-column numbers.

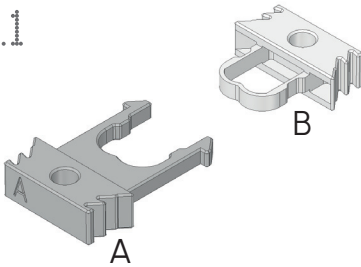
1.6



1.6 Place the artwork parts face down. Make sure the picture lies on a soft surface like a carpet, blanket, or towel to prevent scratching its surface.

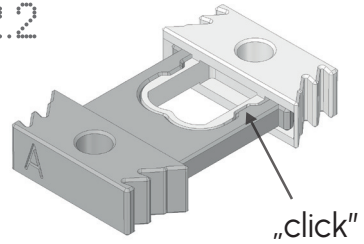


2.1



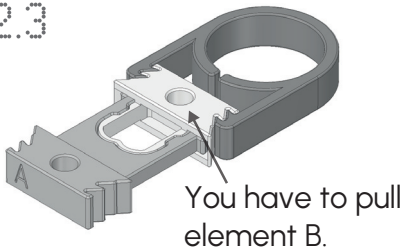
2.1 Select the components labeled as A and B.

2.2



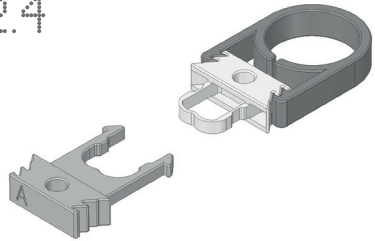
2.2 When correctly connected, you will hear a distinctive "click" sound.

2.3

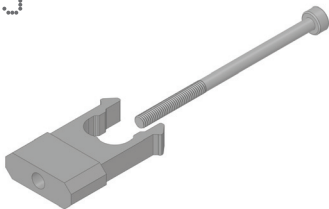


2.3 To disconnect the components, gently pull on component B.

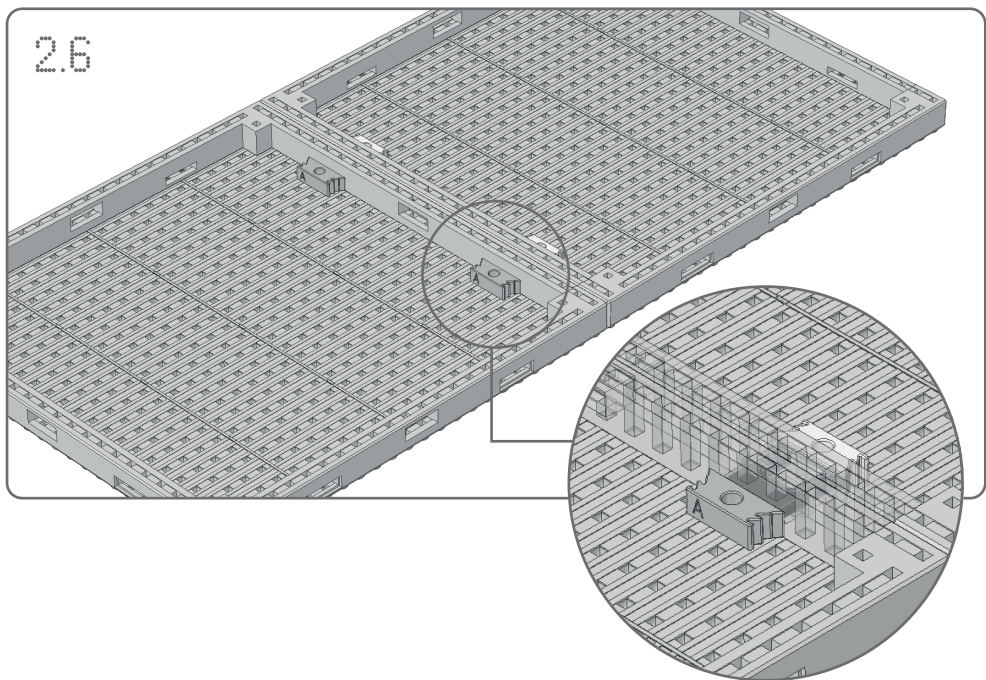
2.4



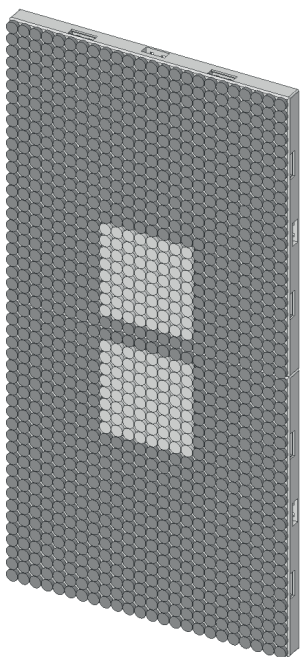
2.5



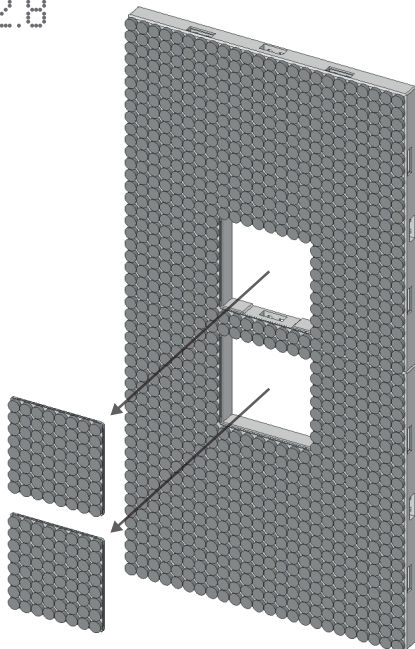
2.6



2.7

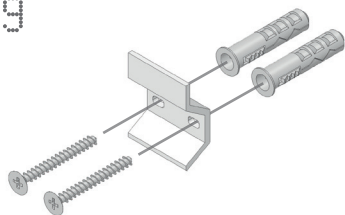


2.8

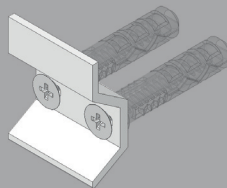


2.7 Before mounting on the wall, remove the covers hiding access to the mounting holes.

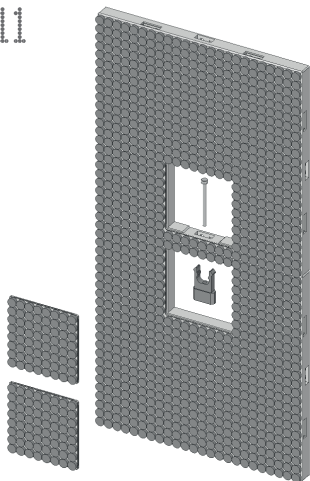
2.9



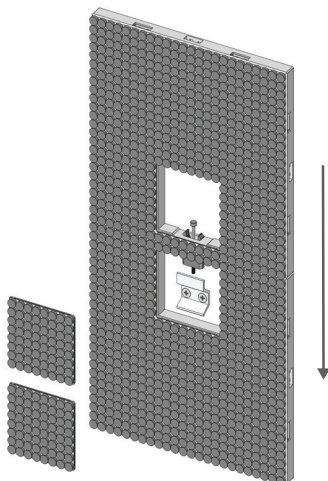
2.10



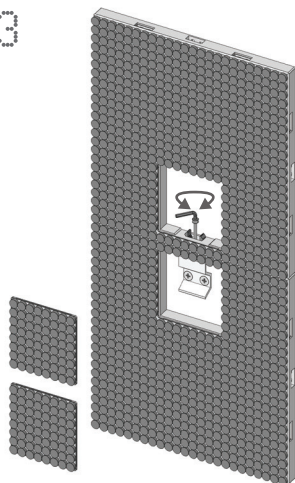
2.11



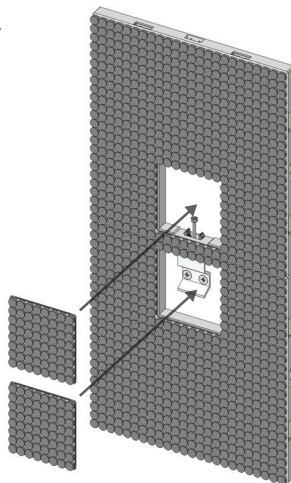
2.12



2.13



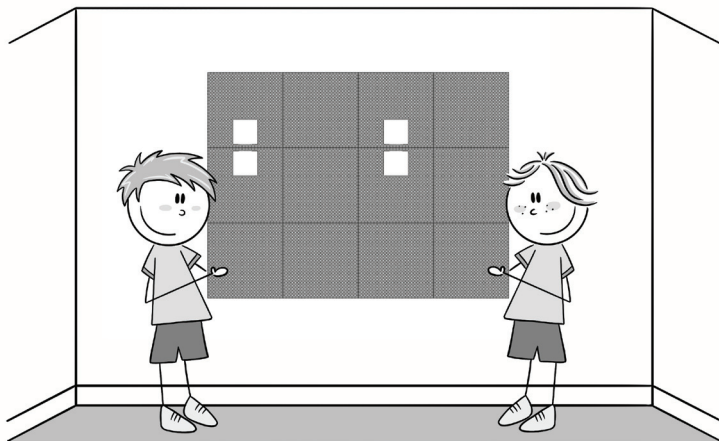
2.14



2.13 After hanging, the height needs to be adjusted:
clockwise = higher, counterclockwise = lower



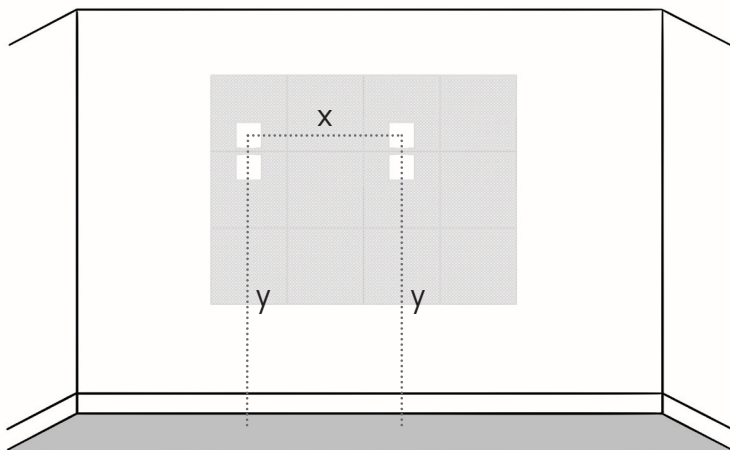
3.1



3.1 Image Placement Preview

Decide where you want to hang the picture and mark the spot with a pencil.

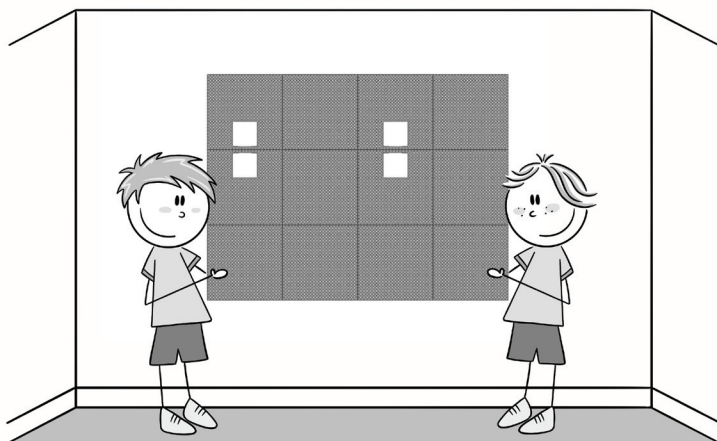
3.2



3.2 Installing Wall Anchors and Measuring Height

Carefully mark the appropriate height for the artwork. Once marked, install the wall anchors at the correct positions.

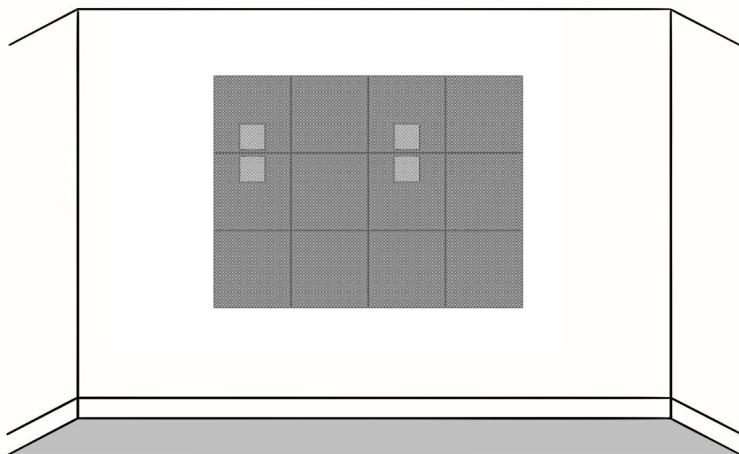
3.3



3.3 Hanging the Artwork and Adjusting

Gently hang the artwork on the mounted anchors. Once in place, adjust the frame to ensure it is level and aligned perfectly. Make any necessary adjustments to achieve the desired positioning.

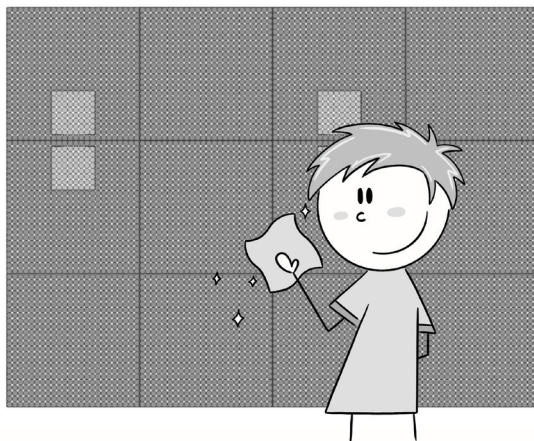
3.4



3.4 Cover the mounting holes



41



4.1 Cleaning the Artwork

Gently clean the artwork using a soft cloth to remove dust or dirt. Be sure to handle the surface with care to avoid any damage.



pixelpicture.eu